

Seminar Booking Form

Seminar Fee: €40 (includes tea/coffee)

Return booking form for LIMERICK seminar to:

Irish Georgian Society
74 Merrion Square
Dublin 2
Tel: 01-6767053
Fax: 01-6620290
Email: info@igs.ie

All cheques payable to: Irish Georgian Society

Name:

Address:

Tel No.

Email:

No. of Places Required (at a cost of €40 per place):

Cheque Amount:

Visa Card/Mastercard No:

--	--	--	--	--	--	--	--	--	--	--	--	--	--	--	--	--	--

Name on Card:

Expiry Date:

m	m
---	---

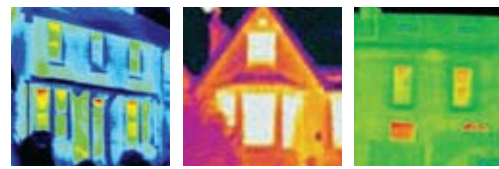
 /

y	y
---	---

Security Code:

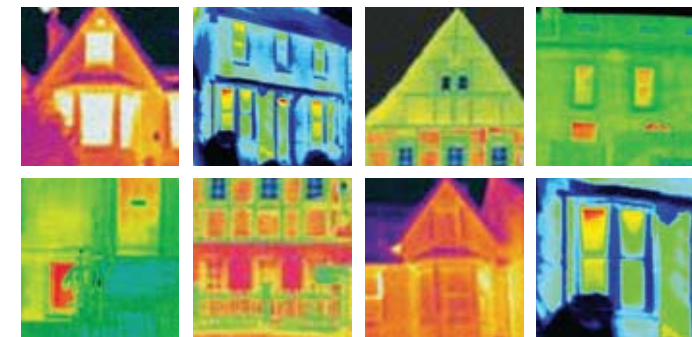
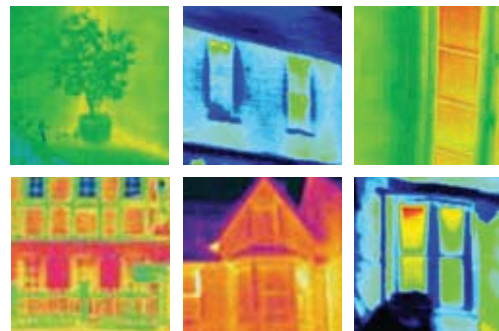
--	--	--

 (last 3 digits on reverse of card)

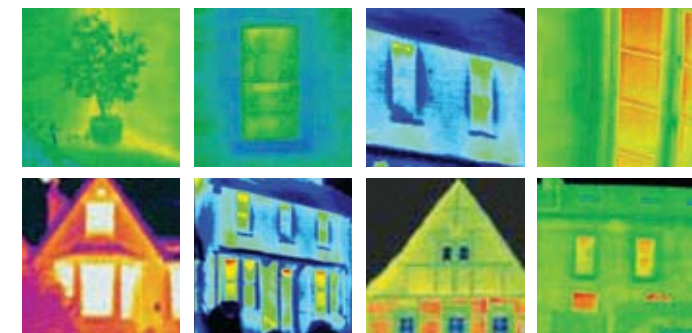


The Irish Georgian Society is committed to informing owners and guardians of Ireland's built heritage of the need to balance energy conservation and building conservation. This Limerick seminar forms part of a series of regional **Energy Efficiency in Historic Houses** seminars, which the Irish Georgian Society is holding throughout the country. The seminars are held in partnership with local authority conservation officers and heritage officers.

The seminars have been made possible through support from the Electricity Supply Board (ESB) and the Department of Environment, Heritage and Local Government's Environment Fund.



Energy Efficiency in Historic Houses Seminar

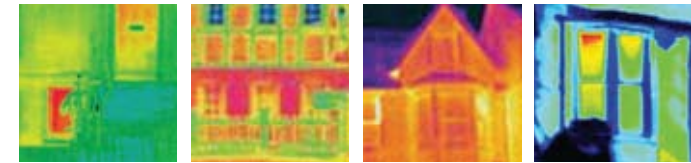


A half-day seminar to be held in
The Council Chamber, Limerick County Council
County Hall, Dooradoyle, Limerick on
Wednesday 18th November 2009

Presented by
Irish Georgian Society & Limerick County Council

Seminar Timetable

Wednesday 18th Nov 2009



- 1.00pm Registration at Council Chambers, Limerick County Council, County Hall, Dooradoyle, Limerick
- 1.20pm **Emmeline Henderson**, Conservation Manager & Assistant Director, Irish Georgian Society, Welcome
- 1.30pm **Tom Cassidy**, Conservation Officer, Limerick County Council, *Energy Performance in Protected Structures; planning implications and grants*
- 2.00pm **Paul Arnold**, Principal, Paul Arnold Architects, *Improving Thermal Efficiency: advice for owners of traditional buildings*
- 2.30pm **Katriona Byrne**, Conservation Officer, Roscommon County Council, *Studies in the Application of Building Energy Rating to Historic Building*
- 3.00pm Tea & Coffee
- 3.30pm **Edith Blennerhassett**, Office Director, Buro Happold Dublin, *Building Services Implications in Historic Houses*
- 4.00pm **Peter Smith**, Technical Advisor, Ecological Building Systems, *The Use of Appropriate Materials in Maximising Energy Efficiency and Moisture Control in Historic Houses*
- 4.30pm Q&As
- 5.00pm Close & Thank You

The seminar will provide practical, appropriate and easy to understand advice and guidance on how to thermally upgrade historic houses and reduce energy costs whilst ensuring that no damage occurs to their historic fabric and character. Crucially, attendance will equip the homeowner with the knowledge of how to obtain the most return for the least cost by doing 'as much as necessary and as little as possible' to ensure a comfortable and sustainable home to live in.

The intended audience is the owner of protected structures and buildings located within architectural conservation areas, as well as owners of any traditionally built historic house. The seminar will also be of interest to architects and attendance at the seminar is recognised by the RIAI as a 'Structured CPD Activity' (2.5 CPD points)

Abstracts & Biographies of Speakers

PAUL ARNOLD

Paul Arnold, B.Arch, FRIAI, RIBA, is the principal of Paul Arnold Architects, which is a Grade I RIAI Conservation Accredited practice that is currently researching the DoEHLG's Advice Notes on improving thermal efficiency in traditionally built buildings.

Abstract: Improving Thermal Efficiency: advice for owners of traditional buildings. Traditional buildings have thermal performance characteristics arising from their design and construction which, if properly understood, can be employed to advantage. Failure to appreciate how buildings and materials behave can result in inappropriate application of technologies developed for modern construction. Issues of use and realistic expectation must also be addressed.

EDITH BLENNERHASSETT

Edith Blennerhassett, BE, CEng, MUBC, MCISSE, MIEI, is a Director of Buro Happold's Dublin Office where in the capacity of services engineer she has worked on a series of sustainable and historic buildings.

Abstract: Building Services Implications - Lean, Mean & Green. There are a number of ways of improving the energy efficiency and thus running costs of an historic building. Many of these are achieved simply by using more efficient modern equipment (boilers, kitchen appliances, light bulbs etc) with good controls (time clocks, thermostats and zoning). Going beyond this it is possible to consider

'green' or 'sustainable' systems (with potential for grant funding) such as solar panels which generate hot water or electricity from the sun or wood fired boilers etc. Edith will give an overview of the options and opportunities to reduce your carbon footprint whilst keeping the built heritage intact.

KATRIONA BYRNE

Katriona Byrne, MA, MUBC, Arc Dip Rec has worked for the conservation departments of Dublin City Council, Cork City Council and since 2007, Roscommon County Council.

Abstract: Studies in the Application of Building Energy Rating to Historic Building. This paper outlines recent research in applying DEAP, the national system of assigning a Building Energy Rating to a building, to some historic buildings in County Roscommon. Although Protected Structures are exempt from compliance with Part L of the Building Regulations many owners and occupiers wish to improve the energy efficiency of their buildings. These studies examine how historic buildings perform in DEAP and are an attempt to propose ways in which changes can be introduced to both improve the rating and protect the building and its character at the same time.

TOM CASSIDY

Tom Cassidy, Conservation Officer, Limerick County Council. Tom Cassidy is an archaeologist who has worked in the field of the built heritage and buildings archaeology since graduating from UCG in the early 1980s. Since 2000 Tom has worked for Limerick County Council as their Conservation Officer. He is an active member of the Building Limes Forum Ireland and ICOMOS Ireland.

Abstract: Energy Performance in Protected Structures; planning implications and grant aid. Planning implications of carrying out works to increase energy performance of protected structures and the requirements to respect the character of a protected structure when carrying out works. Availability of grants to assist in carrying out conservation works and thermal upgrading works.

PETER SMITH

Peter Smith, Technical Advisor, Ecological Building Systems has many years' experience as a project manager on new build and conservation projects, to include Ardraccan House, Meath & Luttrellstown Castle, Dublin.

Abstract: The Use of Appropriate Materials in Maximising Energy Efficiency and Moisture Control in Historic Buildings. This paper deals with the theme of the use of appropriate materials in maximising energy efficiency and moisture control in historic buildings from a building contractor's perspective. It will examine the following: breathable and natural insulations; draught proofing; intelligent moisture management; and dealing with damp internal walls.